

Portsmouth HS Jazz Ensemble

Audition Information



DRUMS

2015

Portsmouth HS Jazz Ensemble

Audition Information



Thank you for being interested in auditioning for this year's 2015-2016 Jazz Ensemble. A couple of things you need to be aware of regarding this year's jazz band. Please look this over carefully as these key points are very important to our ensemble. If you foresee any reason (see below) that you will not be able to fulfill your duties as being a member of our jazz band, please reconsider auditioning.

1. Jazz Ensemble rehearses Wednesday evenings from 6:00 – 8:30 pm
2. We have three major Jazz festivals this school year:
 - Rhode Island State Jazz Festival (URI) – Saturday, January 16, 2016
 - Berklee Jazz Festival – February 6, 2016 (All day)
 - Somerset Jazz Festival – Wednesday, March 2, 2016 (date is tentative)
3. In addition to the above dates we are also performing for our school Winter and Spring concerts.
4. All students need to audition each year, regardless of placement in ensemble last year.
5. Please look ahead at your own personal schedule for the spring. Those students who are involved in spring sports may have to balance their schedule more carefully.

AUDITION DATES:

1. Wednesday, September 15 (2:15 – 3:30). All wind players will need to sign up ahead of time for an audition time slot.
2. Thursday, September 16 (2:15 – 3:30). This is for rhythm section. I invite ALL wind players who auditioned on Wednesday to come and play.

AUDITION MUSIC:

ALL WIND PLAYERS will play (Saxophones, Trombones, Trumpets):

1. Jazz Etude 3
2. Alright, Ok, You Win
3. Brother Ray

ALL RHYTHM SECTION players will play:

1. Alright, Okay, You Win
2. Brother Ray
3. City Slicker

RHYTHM SECTION

1. Prepare the following selections (Guitar, Bass, Piano, Drums):
 1. Alright, Okay, You Win
 2. Brother Ray
 3. City Slicker

***Practice with recordings. You will be playing these tunes with full band accompaniment**

Drums:

- Prepare Alright, Okay, Brother Ray, and City Slicker.
- Be able to play the following styles: Swing, Rock, Funk, Samba
- You may prepare your own piece in addition to the above. Although soloing/drum filling is not necessary, it is preferred.

Guitar:

- You have the option of playing an improvised solo during Alright, Okay, You Win (measure 56-75)
- You may prepare your own solo piece in addition to the above

Piano:

- You have the option of playing an improvised solo during Alright, Okay, You Win (measure 56-75)
- You may prepare your own solo piece in addition to the above.

Bass:

- Prepare Alright, Okay, You Win,/Brother Ray/City Slicker
- You may prepare your own solo piece in addition to the above

ALRIGHT, OKAY, YOU WIN

Words and Music by SID WYCHE
and MAYME WATTS
Arranged by SAMMY NESTICO

DRUMS

MEDIUM SHUFFLE

LIGHTEN UP

The drum score is written on ten staves, numbered 1 through 10. The first staff (1) contains the main melodic line with a key signature of one sharp (F#) and a 4/4 time signature. It includes measures 1-4, with measure 3 marked 'f' and measure 4 marked '4'. The second staff (2) contains a rhythmic pattern of eighth notes with 'x' marks, measures 5-6, and a 7/4 time signature. The third staff (3) contains measures 7-9 with slash marks. The fourth staff (4) contains measures 10-14 with slash marks. The fifth staff (5) contains measures 15-19, with measure 17 marked 'BRASS' and measure 18 marked '8'. The sixth staff (6) contains measures 20-24 with slash marks. The seventh staff (7) contains measures 25-29, with measure 29 marked '29'. The eighth staff (8) contains measures 30-34, with measure 34 marked 'SET UP!'. The ninth staff (9) contains measures 35-39, with measure 37 marked '37' and measure 38 marked '38'. The tenth staff (10) contains measures 40-44 with slash marks. The eleventh staff (11) contains measures 45-49, with measure 48 marked '12'.

DRUMS

Allyah! OK 93. You win - Paz

Musical staff 50-54 with notes and rests.

TO CODA   

Musical staff 55-59 with notes and rests.

Musical staff 60-64 with notes and rests.

FILL


Musical staff 65-69 with notes and rests.

Musical staff 70-74 with notes and rests.

Musical staff 75-79 with notes and rests.

FILL

Musical staff 80-84 with notes and rests.

 BRASS

Musical staff 85-89 with notes and rests.

Musical staff 90-94 with notes and rests.

Musical staff 95-99 with notes and rests.

DS. AL CODA

Musical staff 100 with notes and rests.

 CODA

TOMS

SNARE





BROTHER RAY

Music Department
Portsmouth High
Portsmouth, RI HOWARD ROWE

DRUM SET

RAY CHARLES R & B ALA "WHAT'D I SAY?" ♩ = 136

TRY THIS PATTERN FOR A RAY CHARLES GROOVE

(EVEN 8THS)

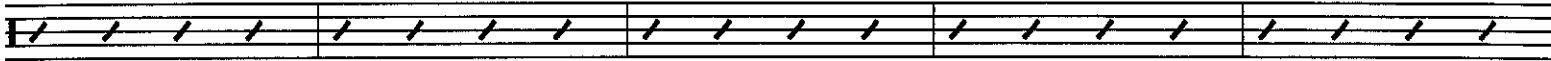
32-5711-00

Bratko Raj - Pg 2

4.

6.

8.



mf

10.

SOLO PICKUPS

4 times then solo

49

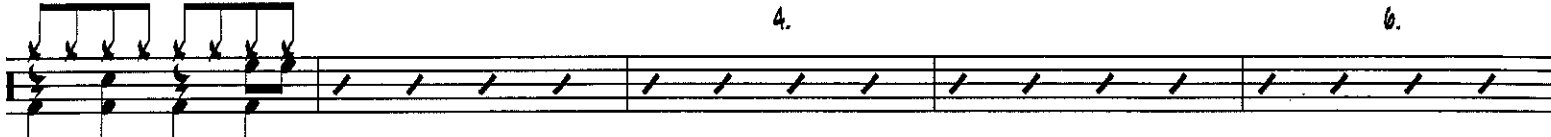
OPEN FOR SOLOS
PLAY SEQDS. ON CUE
VARIATION ON PATTERN



mf

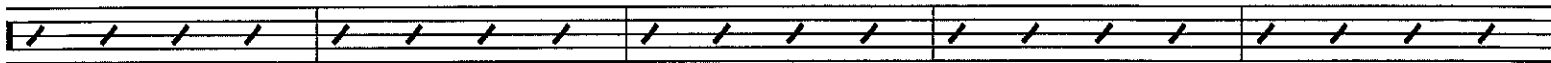
4.

6.



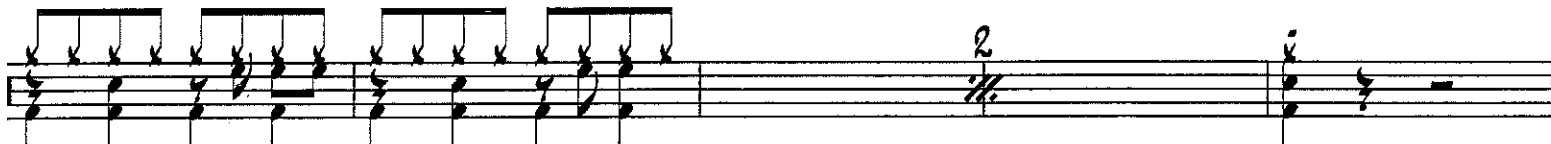
8.

10.

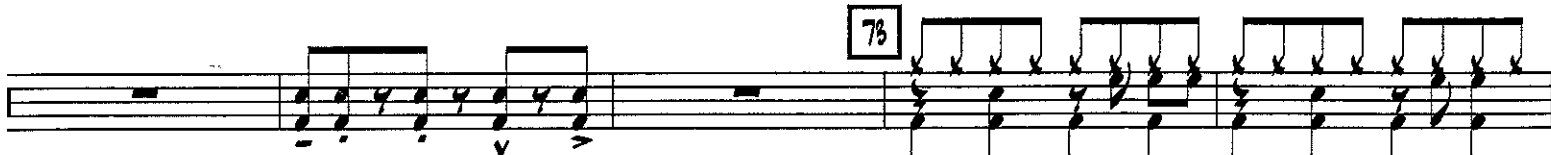


12.

61



73



CITY SLICKER

FUNK-ROCK $\text{♩} = 100$

The drum score is written on ten staves in 4/4 time. It begins with a tempo of 100 beats per minute and a dynamic marking of *mf*. The first staff includes a cross symbol above the first measure and a 'FILL' marking above the eighth measure. The second staff features a triplet of eighth notes with an accent and a circled 'o' above the final note. The third staff has a circled '9' above the eighth measure and another triplet with an accent and circled 'o'. The fourth staff continues with similar triplet patterns. The fifth staff includes a 'FILL' marking above the eighth measure and a circled '3' above the final note. The sixth staff starts with a circled '17' above the first measure and features a series of eighth notes with accents. The seventh staff begins with a 'FILL' marking above the first measure and a circled '21' above the eighth measure. The eighth staff continues with triplet patterns and accents. The ninth staff includes a 'FILL' marking above the eighth measure and a circled '3' above the final note. The tenth staff concludes with a 'FILL' marking above the eighth measure and a circled '3' above the final note. A *ff* dynamic marking is placed at the end of the sixth staff.

OPEN FOR SOLOS

29

Drum notation for measures 29-36. The notation is on a single staff with a double bar line at the beginning. It features a complex rhythmic pattern with many 'x' marks indicating hits. There are accents (>) and a triplet of eighth notes (3) with a circled 'o' above it. The pattern repeats with variations in the bass drum and snare drum parts.

37

Drum notation for measures 37-40. The notation continues on a single staff. It features a complex rhythmic pattern with many 'x' marks indicating hits. There are accents (>) and a triplet of eighth notes (3) with a circled 'o' above it. The pattern repeats with variations in the bass drum and snare drum parts.

41

Drum notation for measures 41-48. The notation continues on a single staff. It features a complex rhythmic pattern with many 'x' marks indicating hits. There are accents (>) and a triplet of eighth notes (3) with a circled 'o' above it. The pattern repeats with variations in the bass drum and snare drum parts. A 'FILL' is indicated above the first measure of this section.

DRUMS

49 SOLO-IN TEMPO

53

61

65