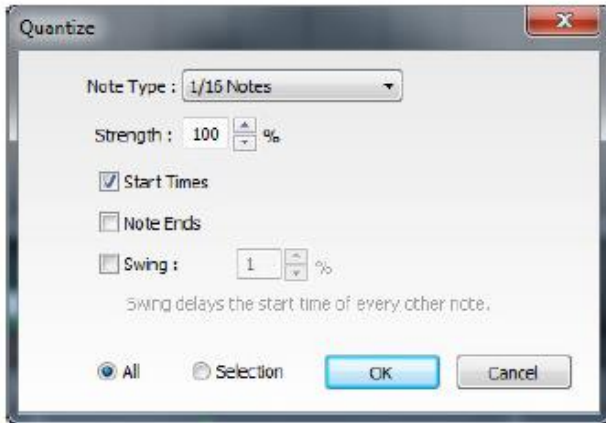


QUANTIZE

Music Production & Engineering – Level 2

QUANTIZE

Quantization is the process of moving notes closer to a set note value or "grid," in order to tighten the timing of sloppy performances. To access the Quantize menu, right-click on a MIDI clip or MIDI data in the Piano Roll Editor and select MIDI Editing>Quantize...



◆ Note Type

Specifies the snap setting to quantize to.

- ◆ If this is set to eighth-note but you're actually quantizing a whole note, it will not adjust the length of the note to an eighth-note, but rather align it to the closest eighth-note.
- ◆ If the *Start Times* box is checked, then the start times of each note will be quantized to this note type.
- ◆ If the *Note Ends* box is checked, then the end times of each note will be quantized to this note type.

◆ Start Time

Click the checkbox next to *Start Time* and then choose a *Note Type* setting. Mixcraft adjusts all notes to the closest beat or partial beat, based on the *Note Type*.

◆ Note Ends

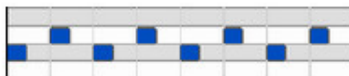
Mixcraft adjusts the note endings to the closest beat or partial beat, based on the *Note Type*.

◆ Swing

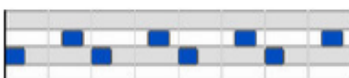
If you want to quantize with swing, click *Swing* and choose an intensity %. *Swing* will offset every note that is on an odd beat, depending on the quantize note start setting.

For example, if you had a recording of eighth notes, set the *Note Type* to eighth-notes and then set *swing* to 30%; every other eighth-note would be offset by 30%.

Before: "Unswing" eighth notes.



After: Quantized eighth notes with a 35% swing. Swingin'!



Video Tutorial:

[Using Mixcraft's quantize and humanize MIDI editing functions.](#)

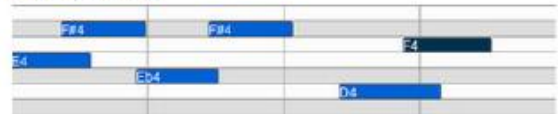
Assignment:

1. Use Mixcraft to create a 30 second music sample.
2. You must record 4 tracks of different instruments. The recordings can be very basic in melody and rhythm.
3. Each track should demonstrate the use of QUANTIZE.
4. Save your project file to the "MUSIC SHARE FOLDER"

◆ All or Selection

Choose whether to quantize the selected notes or all the notes in the current virtual instrument clip. (Only applies if a region is highlighted within the Piano Roll Editor.)

Before quantizing.



After quantizing *Start Times* and *Note Ends* to 1/8 Notes.

